



5028-CM Air/Spring Applied Combination Brake Caliper

Material	Die cast silicon bronze with stainless steel hardware and alloy steel studs	
Weight	345 lb	(156.5 kg)

The 5028-CM brake caliper is operated by a heavy duty industrial type dual-function brake actuator which can provide reliability and precision in the braking operation. These actuators are supplied by a prominent industrial actuator manufacturer.

In the upper chamber of the actuator pot, air pressure is required to overcome the spring pressure to put the brake into a released position. In the absence of air pressure, the spring will provide the necessary force for emergency braking. The upper spring can only provide slightly more than half of the brake force.

In the lower portion, modulated air pressure is applied to the diaphragm against a light spring for the normal braking action. The combination of these actions results in a sensitive and precise braking operation on varying control air pressures.

The wedge mechanism consists of a wedge and rollers that force the levers apart thus applying pressure to the brake disc and give a very accurate control over the brake torque.

Total clamping force	48000 lbf	(213.5 kN)
Total lining area	420 in ²	(2710 cm ²)
Allowable lining wear	0.5 in.	(12.7 mm)
Max. air pressure	100 psi	(690 kPa)
Disc max. thickness	4 in.	(102 mm)
Required disc face	10 in.	(254 mm)

KOBELT Disc – 4" (102 mm)

Disc Dia. in. mm	42.5 (1080)	48.5 (1232)	54.5 (1384)	60.5 (1537)	72.0 (1829)	84.0 (2134)
Acting Rad. in. mm	16.0 (405)	19.0 (482)	22.0 (558)	25.0 (634)	30.5 (774)	36.5 (927)
‡Torque ft-lb kg-m	28800 3980	34200 4730	39600 5470	45000 6220	54900 7590	65700 9080
Max. RPM	1300	1100	1000	900	700	600

Dimensions are in inches (mm). Specifications in metric units are shown in parentheses.

‡ Brake torques are theoretical values based on ideal operating conditions only

Refer to drawing on the back page.

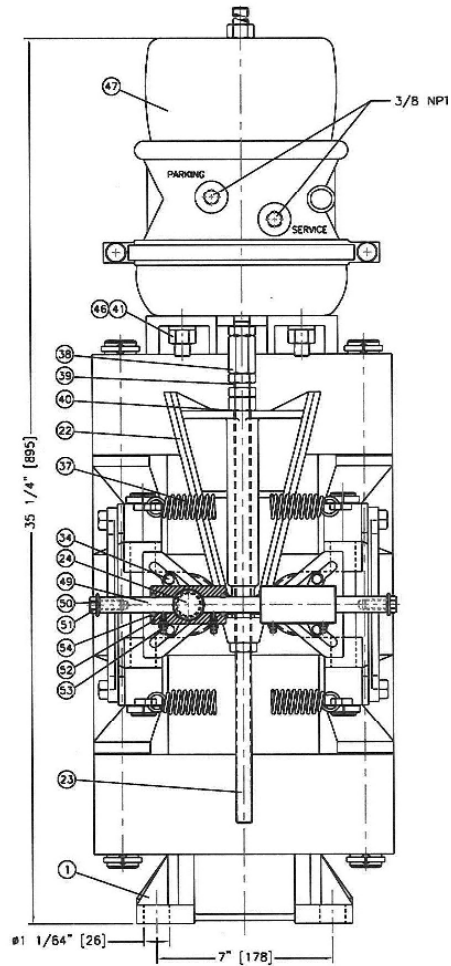
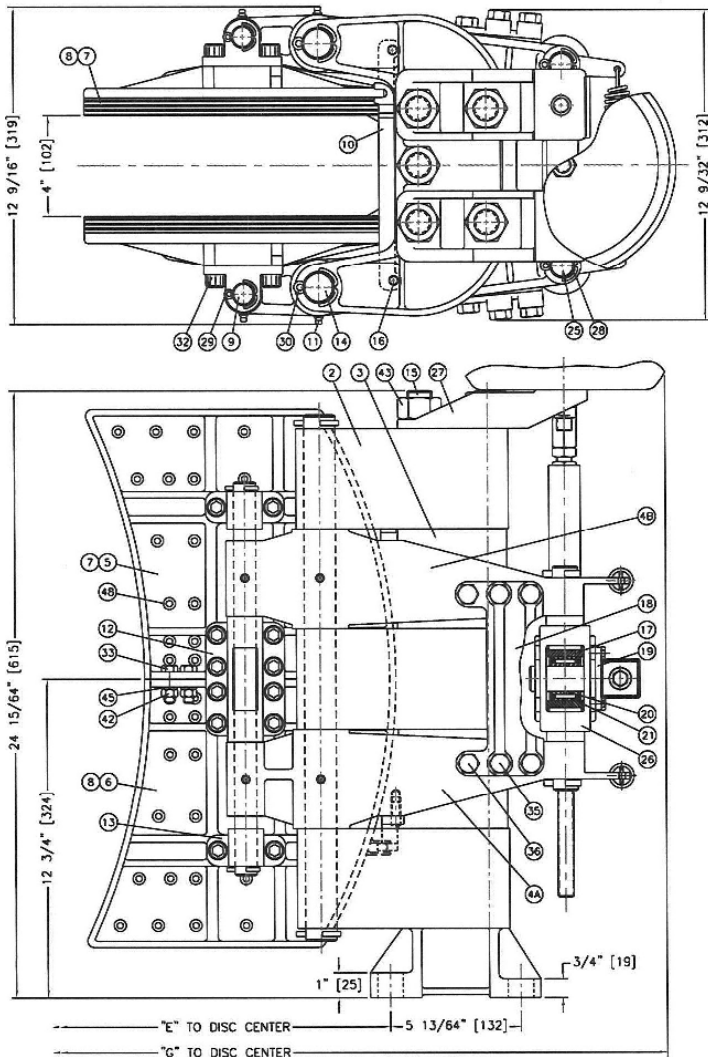
Disc Diameter	42.5" (1080 mm)	48.5" (1232 mm)	54.5" (1384 mm)	60.5" (1537 mm)
DIM "E"	21.0" (532 mm)	24.0" (608 mm)	27.0" (685 mm)	30.0" (761 mm)
DIM "G"	34.5" (876 mm)	37.5" (954 mm)	40.5" (1031 mm)	43.5" (1107 mm)

US Patent 7,857,109 B2

Performance data are for information only and subject to change without notice.
For updated information, please call our Sales and Technical Support department.

07/2014

Model 5028-CM



All Dimensions in inches (mm)

Item	Qty	Part Number	Description	Item	Qty	Part Number	Description
1	1	5028-0001	Foot	27	1	5028-0152	Mounting Bracket
2	3	5028-0002	Saddle	28	4	1026-1024	Cotter Pin
3	2	5028-0003	Spacer	29	4	1039-0352	Hitch Pin
4	2	5028-1004L	Lever (left)	30	4	1039-0470	Hitch Pin
4	2	5028-1004R	Lever (right)	32	24	1002-1420	Socket Hd. Cap Screw
5	2	5028-1005L	Shoe (left)	33	10	1001-1220	Hex Head Cap Screw
6	2	5028-1005R	Shoe (right)	34	4	1001-1010	Hex Head Cap Screw
7	2	5028-0007L	Lining (left)	35	8	1001-1424	Hex Head Cap Screw
8	2	5028-0007R	Lining (right)	36	4	1001-1416	Hex Head Cap Screw
9	2	5026-0028	Pin (Shoe)	37	2	1202-1010	Return Spring
10	2	5028-0030	Balancing Link	38	1	5026-0025	Extension Nut
11	8	1501-0301	Grease Nipple	39	4	1022-0266	Jam Nut
12	2	5028-0013	Centre Hinge Block	40	1	1022-0166	Hex Nut
13	4	5028-0014	Outer Hinge Block	41	2	1022-0116	Hex Nut
14	2	5028-0022	Saddle Pin	42	10	1022-0112	Hex Nut
15	5	5028-0023	Tie Rod	43	5	1022-0123	Hex Nut
16	2	5028-0025	Link Pin	45	10	1023-0312	Lock Washer
17	2	5028-0031	Roller	46	2	1023-0316	Lock Washer
18	2	5028-0043	Lever Bracket	47	1	3636	Actuator Pot
19	2	5028-0044	Locking Plate	48	124	1033-1007	Rivet
20	2	5028-0045	Inner Bushing, IR-162020	49	1	5028-0153	Connection Pin
21	2	5028-0046	Outer Bearing HU-202820-2RS	50	2	1023-0112	Flat Washer
22	1	5028-1047	Wedge	51	2	1001-1216	Hex Head Cap Screw
23	1	5028-0048	Extension Push Rod	52	2	5028-0155	Connection Pin Block
24	2	5028-0154	Roller Shaft	53	4	1501-0301	Grease Fitting
25	2	5028-0050	Roller Guide Pin	54	4	1102-6010	Rod Wiper
26	2	5028-0151	Roller Box				