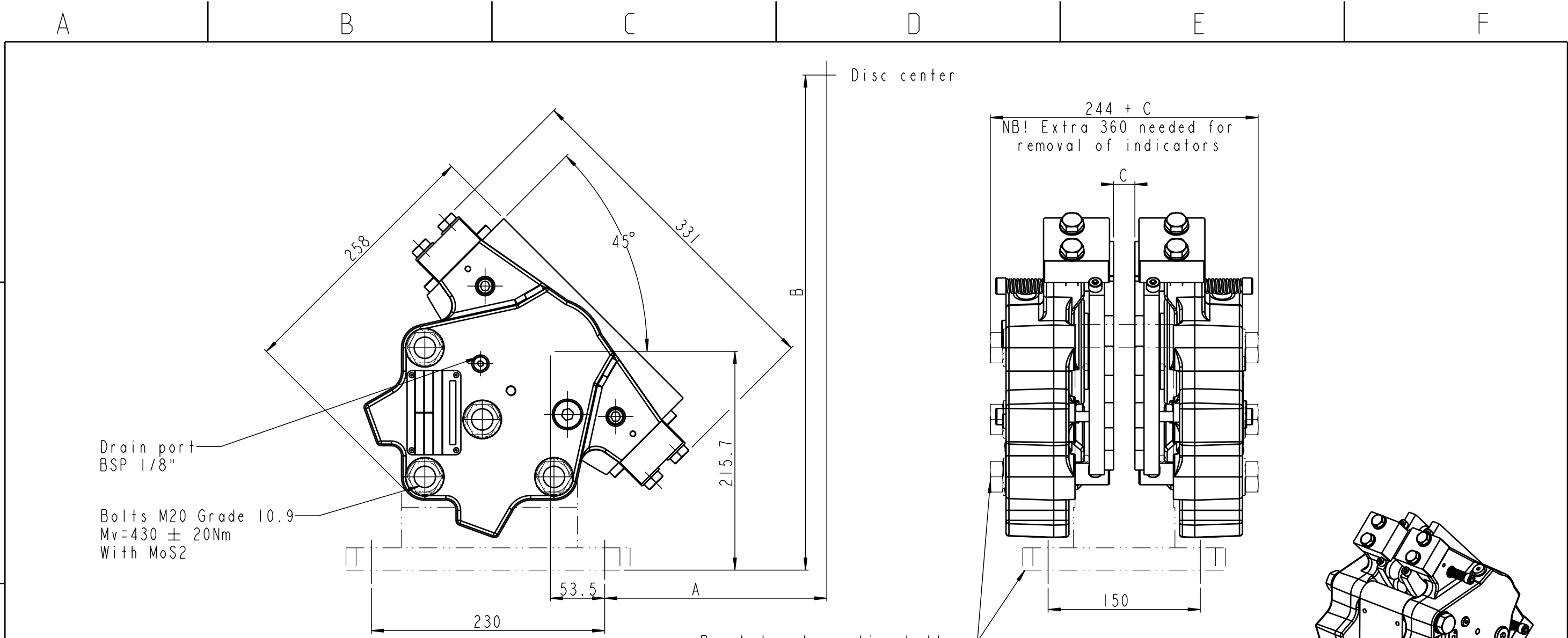


Denmark: Jernbanevej 9, 5882 Vejstrup, Denmark
Germany: Kirchnerstrasse 42, D-32257 Bünde, Germany

This drawing/document is the sole property of Svendborg Brakes A/S and may not be copied, given to a third party or used for unauthorized purpose



Drain port
BSP 1/8"

Bolts M20 Grade 10.9
Mv=430 ± 20Nm
With MoS2

Ø22 (4x)
For bolt M20 grade 8.8
Mv=305 ± 20Nm
With MoS2

Pressure port
BSP 1/4"

Pressure port
BSP 1/4"

Bracket and mounting bolts
are not included in brake

Distance from center of disc (R=Radius of disc)
 $A = 0.707(R - 65) - 53.5$
 $B = 0.707(R - 65) + 215.7$
 $C = \text{Disc thickness}$
 $D = \text{Mounting surface width} = C + 77$
 Mounting drawing, see drawing 490-3463
 Weight: Approx. 50 kg incl. brake pads (excl. bracket and bolts)

Tolerances for corner radii, angles, chamfers and threads according to: DS/EN 22768 - m		✓ Indicates Ra in µm	All dimensions in mm	Accep. for prod. by
Description		BSAK 300-S-200		Drwt+Design checked by
Drawn by R.R.Hansen	Date: 05.08.2005	Drawing No. 490-3444-801		Revision -
SVENDBORG BRAKES				Scale 1:4 (A3)
				Sheet 1 of 1 sheets

Svendborg Brakes A/S reserves the right to revise this document without prior notification or obligation

CONFIDENTIAL

CHECKED by SYSTEM 12-04-2010
RELEASED by nch